

Relationship of body mass index (BMI) to dyslipidemia in Type2 diabetes mellitus

Fadhil A. Nasser *

Ass. Prof. Dr. Abdulhussain A. Algenabi*

Ali M. Kadhim**

*Department of Clinical Biochemistry, College of Medicine, Kufa University, Najaf, Iraq

**Department of Clinical Biochemistry, College of Medicine, Jabber Ibnhyan Medical University, Najaf, Iraq

Abstract: T2DM is a chronic disease characterized by hyperglycemia as a result of insulin dysfunction. Both Dyslipidemia and obesity are considered cardinal features of T2DM.

Aims: To study the relationship of BMI with serum lipid profile in T2DM patients.

Methods: The study consisted of 200 T2DM patients and 200 control individuals. Phenotypic parameters included are body mass index (BMI), and fasting blood sugar (FBS) and lipid profile.

Results :The statistical analyses used to analyze the data. A significant positive correlation of serum TC, TG and LDL levels and significantly negative correlation of serum HDL levels with BMI in patients with T2DM ($p < 0.001$).

Conclusion: Dyslipidemia are associated with BMI in T2DM.

Keywords: T2DM, BMI, lipid profile

1. Background

Type 2 diabetes mellitus (T2DM) is multifactorial disease that wide spreading in the world. Obesity considered risk factor for many diseases such as T2DM, ischemic disease, hypertension and others. (1,2,3). The abnormal fat accumulation in the body are calculated by body mass index (BMI) (4). Dyslipidaemia is a well recognized and modifiable risk factor for cardiovascular diseases which is currently a leading cause of morbidity and mortality world-wide (5).

2: Materials and Methods

2.1. Materials

2.1.1: Individuals

The study was taken place in the biochemistry department laboratory in college of medicine / University of Kufa which contain two included two class (T2DM patients and control group). The study started from February 2016 to May 2017.

The number of study was 200 T2DM patients who have age from 45-63 year with mean 54.23 ± 8.89 . the patients all patients were analysis by doctors in the AL Sader Teaching Hospital in al Najaf AL Ashraf Province. The inclusion criteria : The fasting plasma glucose ,HbA1c and OGTT. The study include 200 obese control subjects . With age ranged between 44-62 years with mean 53.79 ± 8.98 .

2.1.2: Diagnosis criteria

The fasting blood glucose more than 7 mmol/l and HbA1c more than 6.5 mmol/l consider in the diagnosis of T2DM. Also measurement of lipid profile and the body mass index are considered according to WHO 2012

Table (2.1) :classification of obesity according to WHO 2012

Classification	BMI(kg/m ²)
Underweight	<18 .50
Normal range	18.50 - 24.99
Overweight	≥25.00
Obese	≥30.00
Obese class I	30.00 - 34.99
Obese class II	35.00 - 39.99
Obese class III	≥40.00

2.1.3:Kits

table (2.2)In this study used chemicals present in the

kits	company
Blood glucose kit	BIOLABO (France) CAT NO. 80009) SRM ®
HDL - C kit	BIOLABO(France) BIOLABO Kit (86516)
Total cholesterol Kit	BIOLABO(France)
Triglyceride Kit	BIOLABO(France)(80019)

2.2: Methods

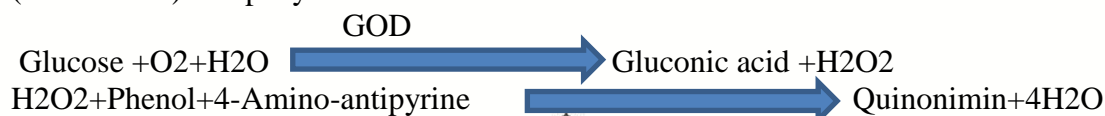
2.2.1:Blood Sampling

Three milliliters of blood, was placed in plain tubes. It was left at room temperature for coagulation (10-15 minutes) . then blood was centrifuged at 2000 xgfor10-15 minutes. Sera were obtained and divided into two parts and stored at - 20°C until analysis for estimation of biochemical measurements (fasting blood sugar, lipid profile and HbA1c).

2.2.2: measurement of fasting blood glucose level

Principle

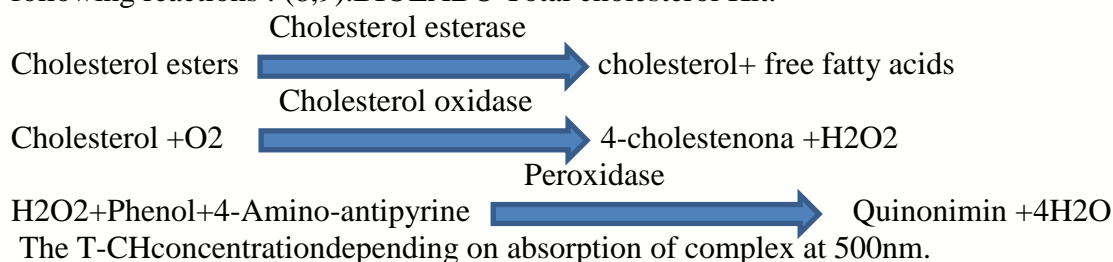
The concentration of glucose in sample related to absorption of complex (quinonium) at 500nm .these enzymatic method contain Glucose-oxidase enzyme (GOD) that oxidize glucose to gluconic acid and H₂O₂(6,7).blood glucose kit (BIOLABO) company.



2.2.3: Measurement of lipid Profile

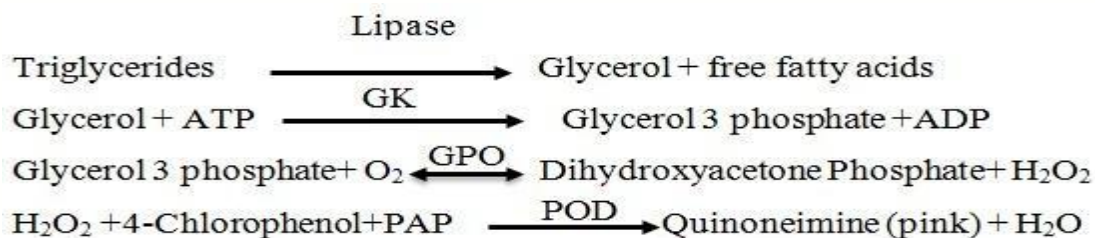
2.2.3.1: Measurement of fasting total cholesterol (TC) concentration

The principle of measurement of TC-cholesterol is enzymatic method include the following reactions : (8,9).BIOLABO Total cholesterol Kit.



2.2.3.2: Measurement of fasting triglycerides (TG) concentration

The enzymatic method include the following reaction: (10). BIOLABO Kit company.



Where.

GK = Glycerol Kinase

GPO = Glycerol 3 Phosphate oxidase

POD = Peroxidase

2.2.3.3: Measurement of high-density lipoprotein cholesterol (HDL-C) level.

Enzymatic method depending on HDL precipitation by using of Phosphotungstic acid and MgCl₂. after centrifugation ,HDL-C was collected from In the supernatant then treated as total cholesterol . (11) the procedure related manufacturer BIOLABO Kit.

2.2.3.4: Determination of VLDL-cholesterol

The VLDL-cholesterol measurement by division of TG by 5 to give mg/dl of VLDL-cholesterol (148).

2.2.3.5: Determination of LDL-cholesterol

The LDL-cholesterol is measurement by indirect method:(12)

LDL-cholesterol = total cholesterol – (HDL-cholesterol + VLDL-cholesterol)

2.3. Statistical analysis

The program SPSS version 20 was used to analysis the data by: Mean ± SD., Student's t-test was used to lipid profile in the patients relative to the control group, the linear regression analysis was applied to evaluate the relationships among lipid profile and BMI of T2DM subjects. And Significant variation was considered when the P value was less than 0.05.

3. Results

The clinical data and biochemical parameters of 200 patients with T2DM are shown in table 3.1. The mean BMI of the participants was 32.1 ± 1.84 kg/m². Results of the blood glucose and lipid profile such as Cholesterol (mg/dl), Triglycerides (mg/dl), VLDL (mg/dl), HDL (mg/dl) and LDL (mg/dl) are significantly different between two groups.

Table 3.1: Clinical and biochemical characteristics of study subjects

parameters	Diabetes	Nondiabetes	P value
No (M/F)	200 (105/95)	200 (115/85)	
Age	54.23 ± 8.89	53.79 ± 8.98	0.62
BMI (kg/m ²)	32.1 ± 1.84	30.96 ± 2.69	< 0.0001
FBS (mg/dl)	245 ± 3.53	87.3 ± 7.59	< 0.0001
Cholesterol (mg/dl)	231.6 ± 5.67	229.08 ± 6.59	0.0001
Triglycerides (mg/dl)	250.12 ± 6.41	248.11 ± 2.82	0.0001
VLDL (mg/dl)	50.02 ± 6.41	47.82 ± 1.59	0.0001
LDL (mg/dl)	141.23 ± 7.22	180.25 ± 6.65	0.0001
HDL (mg/dl)	37.29 ± 3.48	39.58 ± 6.36	0.0001
HbA1c	8.09 ± 0.82	4.56 ± 0.49	0.0001

3.2. The correlation of Lipid profile patients with BMI in T2DM

3.2.1: A significant correlation was recorded between BMI and serum T-CH in patients with T2DM ($r=0.93$, $p=0.000$). Figure (3-1).

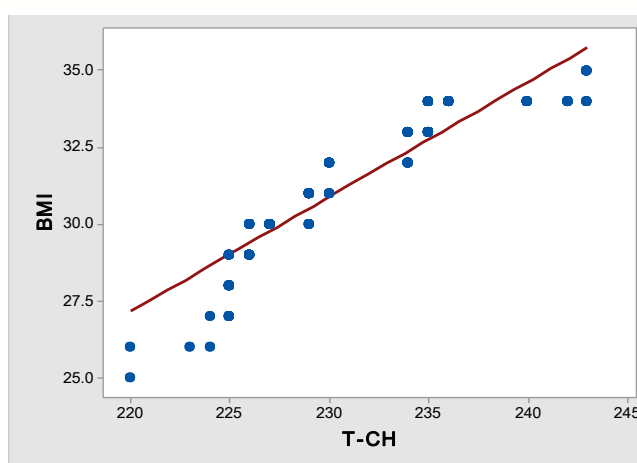


Figure (3-1): The correlation of BMI with total cholesterol concentration in T2DM.

3.2.2. There is a negative significant correlation was recorded between BMI and serum HDL- levels in patients with T2DM ($r=-0.96$, $p=0.000$). Figure (3-2).

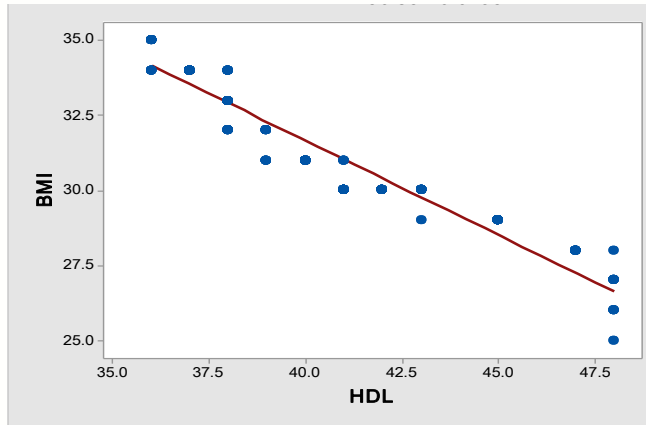


Figure (3-2): The correlation of BMI with serum HDL concentration in T2DM
3.2.3. There is a positive significant correlation was found between BMI and serum LDL levels in T2DM ($r=0.93$, $p=0.000$). Figure (3-3).

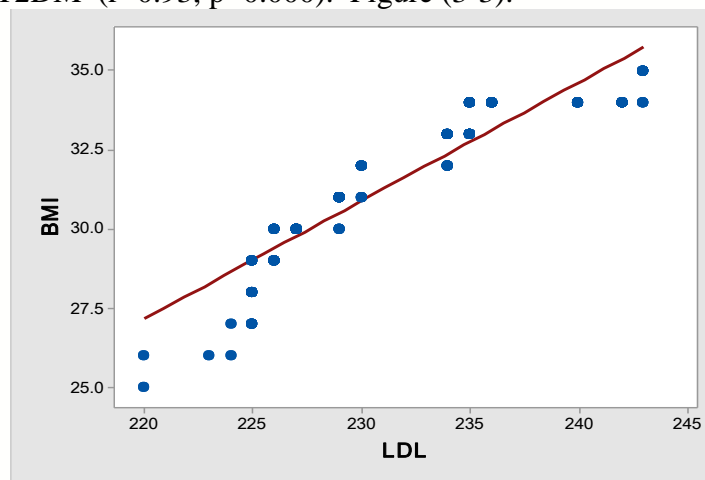


Figure (3-3): The correlation of BMI with LDL-cholesterol concentration.
3.2.4. A positive significant correlation was found between BMI and serum TG. levels with T2DM ($r=0.94$, $p=0.000$). Figure (3-4).

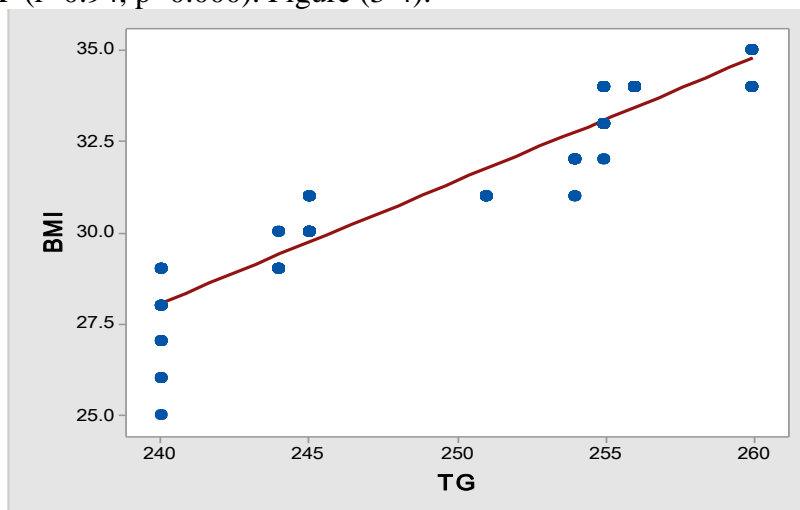


Figure (3-4): The correlation of BMI with total cholesterol concentration in T2DM

4. Discussion

Dyslipidemia is a cardinal feature in T2DM especially uncontrolled diabetes, these abnormality may aggravate the cardiovascular disease in diabetic patients , on other hand obesity is well known risk for both T2DM and dyslipidemia (13,14,15,16).

In this case control study a significant elevation of serum cholesterol ,TG,LDL and VLDL were observed in T2DM ,in contrast a significant low level of HDL were reported in T2DM. These results are agree with many of previous studies (17,18,19,20,21,22).

Obesity subjects are more prone to development of dyslipidemia (23,24). The results of present study show a positive correlation between BMI with T-CH,TG, LDL,VLDL levels .these results are agreement with many studies (25,26).

The dyslipidemia in diabetic patients are related to increase free fatty acids reach to the liver which causes high TG,LDL,VLDL levels and low HDL .the increase production of TG from liver to the blood then activate the secretion of apo B and VLDL.the VLDL is transported the TG in exchange with HDLtransported cholesteryl ester through the action of cholesteryl ester protein . from that the results are accumulate VLDL and TG . the HDL riched with TG is hydrolysis by hepatic lipase or lipoprotein lipase leading to eliminated by renal glomeruli (27).

The another pathway for low HDL-c in diabetes includes resistance to the action of insulin to regulation of apo A-I synthesis.(28,29). In addition to that the 3rd pathway of pathogenic mechanism od dyslipidemia in diabetes is related to increase the inflammatory cytokines e.g. (TNF alpha) which increase the insulin resistance and then dysfunction of apo A-I (30).

The dyslipidemia in obesity is elevated fasting and postprandial TG, LDL and low HDL-C. The high level of TG is the major factor for lipid profile disorders (31,32).

The source of plasma free fatty acids are : lipolysis of TG- lipoproteins and lipolysis in adipose tissue. plasma FFA are elevated in obese subjects as increased fatty acid release from adipose tissue and a decrease in elimination of in plasma FFA (33–34). The increase in FFA and obesity-stimulate the inflammation which play a role in the aggravate of insulin resistance (35).

Some fatty acids are cytotoxic Saturated fatty acids (SFA)can induced inflammation by stimulate the synthesis of pro-inflammatory cytokines like IL-1, IL-6 and TNF- α , which is increase insulin resistance whereas poly unsaturated fatty acids has anti-inflammatory properties (36,37,38).

Treatment of obesity-associated dyslipidemia should be focused on lifestyle changes including weight loss, (39). Physical exercise (40,41,42) and a healthy diet (43). Lifestyle changes synergistically improve insulin resistance and dyslipidemia (44).

REFERENCES

1. An R. Prevalence and trends of adult obesity in the US, 1999–2012. ISRN Obese. 2014;2014:24–29.
2. Legal KM, Carroll MD, Kit BK, Ogden CL. Prevalence of obesity and trends in the distribution of body mass index among US adults, 1999–2010. JAMA. 2012;307(5):491–497.
3. de Wilde JA, Zandbergen-Harlaar S, van Buuren S, Middelkoop BJ. Trends in body mass index distribution and prevalence of thinness, overweight and

- obesity in two cohorts of Surinamese South Asian children in The Netherlands. *Arch Dis Child*. 2013;98(4):280–285.
4. Clinical guidelines on the identification, evaluation, and treatment of overweight and obesity in adults e the evidence report. National Institutes of Health. *Obes Res* 1998; 6(Suppl 2): 51se209s.
 5. JA Kayode, AO Sola, AS Matthew, BO Adesola, I Ademola, AT Adedeji and AS Adelani. Lipid profile of type 2 diabetic patients at a rural tertiary hospital in Nigeria. *Journal of Diabetes and Endocrinology*, 1(4), 2010, 46-51.
 6. Passey RB, Gillum RL, Fuller JB, et al. Evaluation and comparison of ten glucose methods and the reference method recommended in the proposed product class standard. *Clinical Chemistry*.1977; 23: 131–139.
 7. Trinder P. Ann. Determination of glucose in blood using glucose oxidase with an alternative oxygen acceptor. *Clinical of biochemistry*1969;6:24-25.
 8. Friedewald WT, Levy RI and Fredrickson DS. Estimation of the concentration of low-density lipoprotein cholesterol in plasma, without use of the preparative ultracentrifuge. *Clinical chemistry*. 1972; 18:499 –502.
 9. Young DC. Effect of drug on clinical laboratory test. Fourth edition. 1995; 3:143 –164.
 10. Fossati P and Principe L. Serum triglyceride determined colorimetrically with an enzyme that produce hydrogen peroxide. *Clinical chemistry*.1982; 28:2077–2080.
 11. Tietz NW. textbook of clinical chemistry. Third edition. Burits CA, Ashwood ER, Saunder WB.1999; 819 – 861.
 12. Friedewald WT, Levy RI and Fredrickson DS. Estimation of the concentrationof low-density lipoprotein cholesterol in plasma, without use of the preparative ultracentrifuge. *Clinical chemistry*. 1972; 18:499 –502.
 13. MA Devi, NS Singh, and SS Singh. Thyroid Dysfunction in Type 2 Diabetic Patients in Urban Area of Minipur. *International Journal of Pharmaceutical Invention*, 2, 2013, 7-9.
 14. CEJ Udiong, MH Etukudoh, IK Isong, and EF Udoisa. Evaluation of BMI and Lipids Profile in Type 2 Diabetic Subjects with Low and Raised Levels of Thyroid Hormone in Calabar, Nigeria. *Journal of Diabetes Mellitus*, 5, 2015, 277-283.
 15. HS Sandhu, S Koley and KS Sandhu. A Study of Correlation between Lipid Profile and Body Mass Index (BMI) in Patients with Diabetes Mellitus. *J. Hum. Ecol*. 24(3), 2008, 227-229
 16. Vazquez LA, Rodríguez A, Salvador J. Relationships between obesity, glycaemic control, and cardiovascular risk factors: a pooled analysis of cross-sectional data from Spanish patients with type 2 diabetes in the preinsulin stage. *BMC Cardiovascular Disorders*. 2014; 14: 153.
 17. Ram N, Ahmed B, Hashmi F, Jabbar A. Importance of measuring Non-HDL cholesterol in type 2 diabetes patients. *J Pak Med Assoc*. 2014; 64: 124-128.
 18. Hassan MM, Sharaf SA, Soliman HM, Al-Wakeel NA. Dyslipidemia: A Cardiovascular Risk Factor in Type 1 Diabetes and Its Correlations. *J Diabetes Metab*. 2015; 6:586.
 19. Borggreve SE, De Vries R, Dullaart RP. Alterations in high-density lipoprotein metabolism and reerse cholesterol transport in insulin resistance and type 2 diabetes mellitus: role of lipolyticenymes, lecithin: cholesterol

- acyltransferase and lipid transfer proteins. *Eur J Clin Invest.* 2003; 33:1051-1069.
20. Aljabri KS, Bokhari SA, Akl A. The Relation between Overweight, Obesity and Plasma Lipids in Saudi Adults with Type 2 Diabetes. *Int J Diabetes Clin Res.* 2015; 2: 33.
 21. Kuryan RE, Jacobson MS, Frank GR. Non-HDLcholesterol in an adolescent diabetes population. *Jour CliniLipidol.* 2014; 8: 194–1 98.
 22. Eliasson B, Gudbjornsdottir S, Zethelius B, Eeg-Olofsson K and Cederholm J (2014). LDL-cholesterol versus non- HDL-to-HDLcholesterol ratio and risk for coronary heart disease in type 2 diabetes. *Euro JournPrevenCardiol.* 2014; 21: 1420–1428.
 23. Boden, G. Obesity, insulin resistance and free fatty acids. *Curr. Opin. Endocrinol. Diabetes Obes.* 2011, 18, 139–143.
 24. Zalesin, K.C.; Franklin, B.A.; Miller, W.M.; Peterson, E.D.; McCullough, P.A. Impact of obesity on cardiovascular disease. *Med. Clin. North. Am.* 2011, 95, 919–937.
 25. Castro Cabezas, M.; Elte, J.W. Farewell to the metabolic syndrome? Not too soon. *Atherosclerosis* 2009, 204, 348–349; author reply 350–351.
 26. Franssen, R.; Monajemi, H.; Stroes, E.S.; Kastelein, J.J. Obesity and dyslipidemia. *Med. Clin. North. Am.* 2011, 95, 893–902.
 27. Mooradian AD. Dyslipidemia in type 2 diabetes mellitus. *Nat ClinPractEndocrinolMetab.* 2009;5:150–9.
 28. Mooradian AD, Haas MJ, Wehmeier KR, Wong NC. Obesityrelated changes in high density lipoprotein metabolism. *Obesity.*2008;16:1152–60.
 29. Mooradian AD, Haas MJ, Wong NC. Transcriptional control of apolipoprotein A-I gene expression in diabetes mellitus.*Diabetes* 2004;53:513–20.
 30. Haas MJ, Mooradian AD. Regulation of high-density lipoprotein by inflammatory cytokines: establishing links between immune dysfunction and cardiovascular disease. *Diabetes Metab Res Rev.* 2010;26:90–9.
 31. Capell, W.H.; Zambon, A.; Austin, M.A.; Brunzell, J.D.; Hokanson, J.E. Compositional differences of LDL particles in normal subjects with LDL subclass phenotype A and LDL subclass phenotype B. *ArteriosclerThromb. Vasc. Biol.* 1996, 16, 1040–1046.
 32. Hokanson, J.E.; Krauss, R.M.; Albers, J.J.; Austin, M.A.; Brunzell, J.D. LDL physical and chemical properties in familial combined hyperlipidemia. *Arterioscler. Thromb. Vasc. Biol.* 1995, 15, 452–459.
 33. 85. Bjorntorp, P.; Bergman, H.; Varnauskas, E. Plasma free fatty acid turnover rate in obesity. *Acta Med. Scand.* 1969, 185, 351–356.
 34. Van Oostrom, A.J.; van Dijk, H.; Verseyden, C.; Sniderman, A.D.; Cianflone, K.; Rabelink, T.J.; Castro Cabezas, M. Addition of glucose to an oral fat load reduces postprandial free fatty acids and prevents the postprandial increase in complement component 3. *Am. J. Clin. Nutr.* 2004, 79, 510–515.
 35. Capurso, C.; Capurso, A. From excess adiposity to insulin resistance: The role of free fatty acids. *Vascul. Pharmacol.* 2012, 57, 91–97.
 36. Lottenberg, A.M.; AfonsoMda, S.; Lavrador, M.S.; Machado, R.M.; Nakandakare, E.R. The role of dietary fatty acids in the pathology of metabolic syndrome. *J. Nutr. Biochem.* 2012, 23, 1027–1040.

37. Sears, B.; Ricordi, C. Role of fatty acids and polyphenols in inflammatory gene transcription and their impact on obesity, metabolic syndrome and diabetes. *Eur. Rev. Med. Pharmacol. Sci.* 2012, 16, 1137–1154.
38. Kopp, A.; Gross, P.; Falk, W.; Bala, M.; Weigert, J.; Buechler, C.; Neumeier, M.; Scholmerich, J.; Schaffler, A. Fatty acids as metabolic mediators in innate immunity. *Eur. J. Clin. Invest.* 2009, 39, 924–933.
39. Patalay, M.; Lofgren, I.E.; Freake, H.C.; Koo, S.I.; Fernandez, M.L. The lowering of plasma lipids following a weight reduction program is related to increased expression of the LDL receptor and lipoprotein lipase. *J. Nutr.* 2005, 135, 735–739.
40. Thomas, T.R.; Horner, K.E.; Langdon, M.M.; Zhang, J.Q.; Krul, E.S.; Sun, G.Y.; Cox, R.H. Effect of exercise and medium-chain fatty acids on postprandial lipemia. *J. Appl. Physiol.* 2001, 90, 1239–1246.
41. Ferguson, M.A.; Alderson, N.L.; Trost, S.G.; Essig, D.A.; Burke, J.R.; Durstine, J.L. Effects of four different single exercise sessions on lipids, lipoproteins, and lipoprotein lipase. *J. Appl. Physiol.* 1998, 85, 1169–1174.
42. Harrison, M.; Moyna, N.M.; Zderic, T.W.; O’Gorman, D.J.; McCaffrey, N.; Carson, B.P.; Hamilton, M.T. Lipoprotein particle distribution and skeletal muscle lipoprotein lipase activity after acute exercise. *Lipids. Health Dis.* 2012, 11, doi:10.1186/1476-511X-11-64.
43. Maki, K.C.; Pelkman, C.L.; Finocchiaro, E.T.; Kelley, K.M.; Lawless, A.L.; Schild, A.L.; Rains, T.M. Resistant starch from high-amylose maize increases insulin sensitivity in overweight and obese men. *J. Nutr.* 2012, 142, 717–723.
44. Klop, B.; Castro Cabezas, M. Chylomicrons: A key biomarker and risk factor for cardiovascular disease and for the understanding of obesity. *Curr. Cardiovasc. Risk. Rep.* 2012, 6, 27–34.