

تقدير تركيز الكلوبولينات المناعية في مرضى التهاب المفاصل الروماتويدي
Rheumatoid Arthritis

IgA IgG
IgM

Abstract

The study included 30 cases, 15 patients suspected with rheumatoid arthritis (RA) from margan hospital and Hilla general hospital in Babylon governorate, and 15 apparently healthy subject with no history of RA and were selected as control group. The immunoglobulins concentration of sera were estimated by using single radial immunodiffusion assay . The study showed significant elevation in concentrations of immunoglobulins IgG and IgA in patients in comparison with control group , while there was non- significant elevation in concentration of immunoglobulin IgM in comparison with control group.

Key word : Immunoglobulins. Patients . Rheumatoid Arthritis

(RA)

inflammatory synovitis

. (Majithia and Geraci, 2007)

Hypergammaglobuliemia

RA

(Mahajan *et al.*, 1990)

IgM

rheumatoid factor (RF)

(Young *et al.*, 1979) RA

%

-

IgG

Fc

(Hughes, 1979)

RF

RF

(Williams , 1983)

. (Rodrigues *et al.*, 1982)

IgG IgM

()

Polkonen

RA

B- cells

Segond suppressor T- cells
Hraturum RA ()
RA ()

RA autoimmunity reactions
(Avameas , 1991)

Patients

Collection of Blood Samples

(Bishop *et al.*, 1985)

Estimation of Immunoglobulins Concentration

(Mancini *et al.*, 1965) single radial immunodiffusion assay

-:

(°)

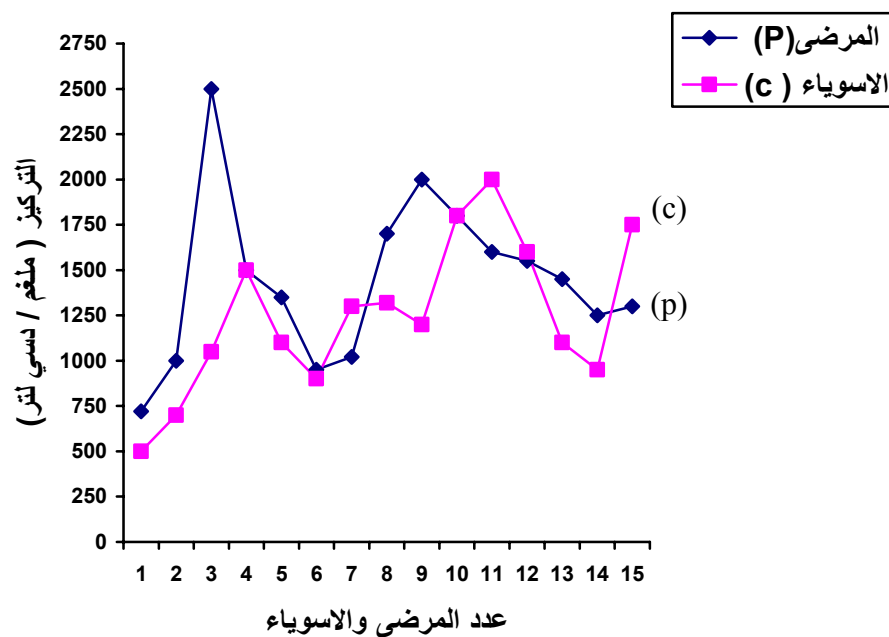
() % ,

IgA IgG °

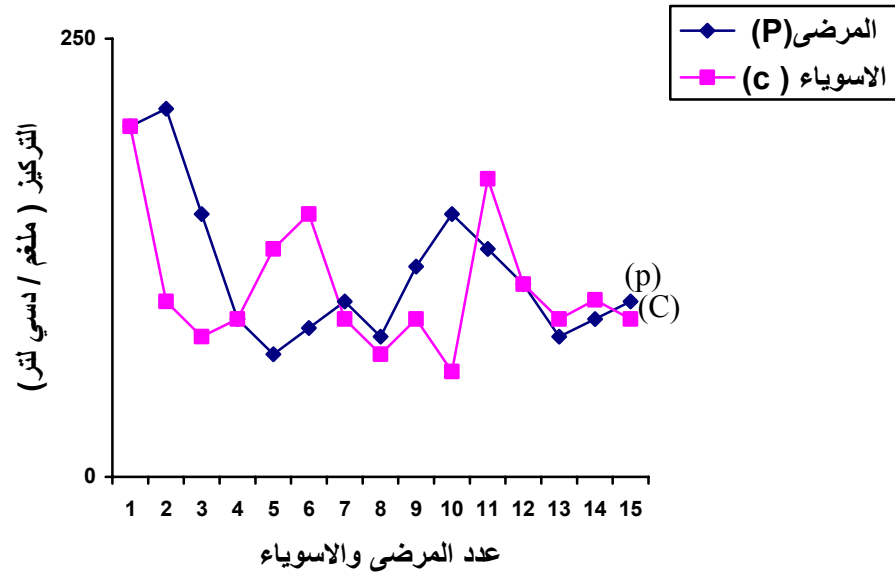
. IgM

IgM IgA, IgG ()
 / IgG
 / , IgG
 IgM ()
 IgM / ,
 IgA () / ,
 .() (/ ,) (/ ,)
 IgM IgA IgG : ()

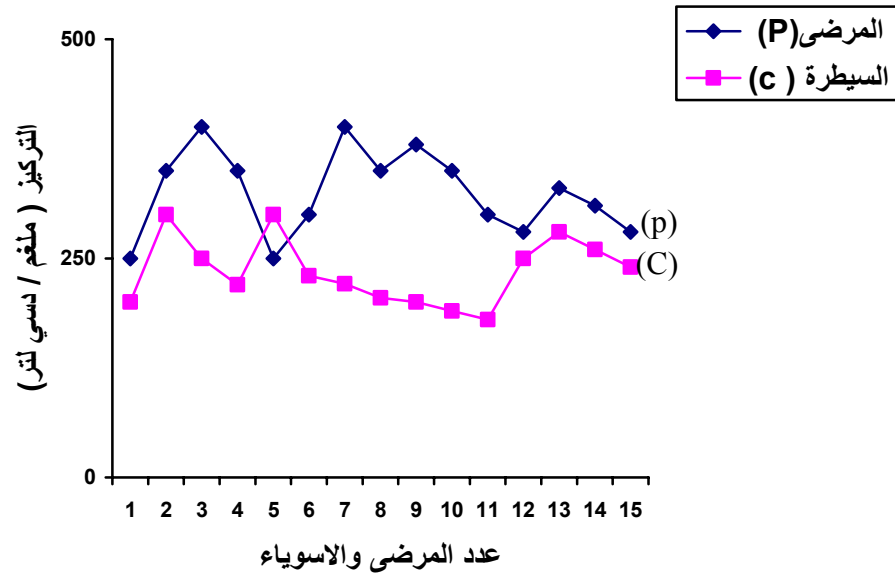
(/)	(/)	
± ()	±	IgG
, ± ,	, ± ,	IgA
, ± ,	, ± ,	IgM



IgG : ()



IgM : ()



IgA : ()

IgA IgG ()

IgM

RA

RA

. (Nies *et al.*, 1981 ; Nushinarita *et al.*, 1981) Synovial tissue

IgM () Claessens Veys
 IgA IgG RA
 IgM – IgG) IgM RA
 (complex
 pathogenetic relationship IgA
 (RF) RA IgA
 IgA
 RA IgG
 germ- free animals
 IgG
 IgG RA
 haemolytic anaemia

(Harvy and Champe , 2008)

References

- Avrameas , S. (1991). Natural autoantibodies: from , horror autotoxicus, to gnothi seauton. *Immunol. Today*, 12: 154-159.
- Bishop, M. G.; Dben- Von Laufer, J. L.; fody, E. P. and et al.,. (1985). *Clinical chemistry principles, procedures and correlations* . The Murrag printing Company, Philadelphia, pp: 181-1982.
- Harvey, R.A. and Champe, P.C. (2008). *Immunology*. Pp.202-206 . Wolters Kluwer. Lippincott Williams and Wilkins, Philadelphia. USA.
- Hughes, G. R. V. (1979). *Connective Tissue Diseases* , 2nd ed., Oxford , Blackwell.
- Hvatum, M.; Kanerud, L.; Hallgren, R., and Brandtzaeg, P. (2006). The gut – joint axis : cross- reactive food antibodies in rheumatoid arthritis. *Gut*, 10: 1136.
- Mahajan, K.; Kauta, S. and Mittal, R. L. (1990) Estimation of serum levels of immunoglobulins G. A and M in seronegative and seropositive C. Rheumatoid arthritis. *Indian J. Med. Micro.*, 8 (3): 110-113.
- Majithia , V. and Gerai, S.A. (2007) Rheumatics arthritis : diagnosis and management *Am. J. Med.*, 120: 936-99-39.
- Mancini, G.; Carbonaro, A. O., and Heremans, J. F. (1965). Immunochemical quantitaion of antigens by single radial immunodiffusion. *Immunochemistry*, 2: 235-254.
- Nies, K. M.; Stevnns, R.H. and Louie, J. S. (1981). Impaired immunoglobulin IgM synthesis by peripheral blood lymphocytes in systemic lupus erythematosus a primary B- cell defect. *Clin. Immunol. Immunopathol.* ; 19:118-130.

- Nushinarita, S.; Takizama, I.; Hirai, H.; Morita, K. and Amaki, I. (1981). Suppressor T- cells dysfunction and depressed immunoglobulin production by B- cells in vitro in patients with SLE. *J. Rheumatol.*, 8: 19-30.
- Poikonen, K.; Oka, M.; Mottonen, T.; Jokinen, J. and Arvilommi, H. (1982). Synthesis of IgM, IgG, and IgA in rheumatoid arthritis. *Annals of the Rheumatic Diseases*, 41: 607-611.
- Rodrigues, M. A.; Ceuppens, J. L. and Godwin, J.S. (1982). Regulation of IgM rheumatoid factor production in lymphocyte cultures from young and old subjects. *J. Immunol.*, 128 (6): 2422.
- Segond, P.; Delfraissy, J. F.; Galanaud, P.; wallon, C. ; Massias, P. and Dormont, J. (1979). Depressed primary in vitro antibody response in rheumatoid arthritis. *Clin. Exp. Immunol.*, 37: 196-204.
- Vegs, E.M. and Claessens, H.E. (1968). Serum Levels of IgG, IgM and IgA in rheumatoid arthritis. *Auu. Rheum. Dis.*, 27: 431.
- Williams, R. C. (1983). Rheumatoid factors. *Human Pathology*. 14: 386.