

Fibroma in the nasal cavity of donkey

K.H.Zenad

Coll. of Vet.Med./ Unive.
of Bagdad

A.S. Hamza

Coll. of Vet.Med./ Unive.
of Al-Qadissia

S.S. AL-Najjar

Coll. of Vet.Med./ Unive.
of Bagdad

Abstract

A donkey referred to our private clinic suffers from a solid mass bulging into the nasal cavity rounded in shape (10X11X11.5 cm). This mass was completely removed by surgery and sent to the pathology laboratories. The histopathologic examination showed an extensive fibroblast proliferation form bands with different directions with whorly pattern appearance, the fibroblast showed extensive collagen and hyper-chromatic nuclei with heavy eosinophile infiltration. This lesion diagnosed as a solid fibroma and this is the first report that refers to fibroma in the nasal sputa of donkey.

Introduction

Fibroma one of the benign tumors occur in the body in any organ containing connective tissue, following fibroblast proliferation mostly common in the dermis and subcutaneous tissue of the body of all animals (1), and human (2).

Fibroma rarely reported in the nose so this report considered the first report recorded the fibroma in the nasal sputa.

Methods

- 1- The abnormal mass was completely removed by surgery.
- 2- The histologic samples were fixed with 10% neutral puffer's formalin.
- 3- Histopathologic slides were done according to luna (3).

Gross examination:

Mass were found in the form of solid mass, bulging into the nasal cavity, have a dense whitish gray, glistening appearance. This mass was removed by surgery and sent to the pathology laboratory.

Histopathologic examination:

The fibromatous growth present in any part of the body containing the connective tissue follows many causative agent (1). Dixon and Head, (4). Reported one case of fibroma from 28 equine nasal and paranasal sinus tumors. The whorly pattern of the fibroblast proliferation follows proliferation of each band of fibroblast with the same

Subcutaneous lesion originated from nasal sputa, there is extensive proliferation of fibroblast in the form of bands with a different direction giving appearance of whorly pattern (Fig: A, B), the fibroblast show extensive collagen and hyperchromatic nuclei, and the fibroblast proliferation, the tumor mass in certain section highly vassiclarized due to a newly formed capillaries which seen in histological section and there was too much eosinophil infiltration (Fig: C. D.).

Diagnosis: solid fibroma.

Discussion

direction so different directions of fibroblast bands giving whorly pattern (1). The eosinophilic proliferation occurs following any antigenic stimulation, due to parasitic infestation or hypersensitivity reaction (5), these two types of reaction may be present in this animal.

Appendix:

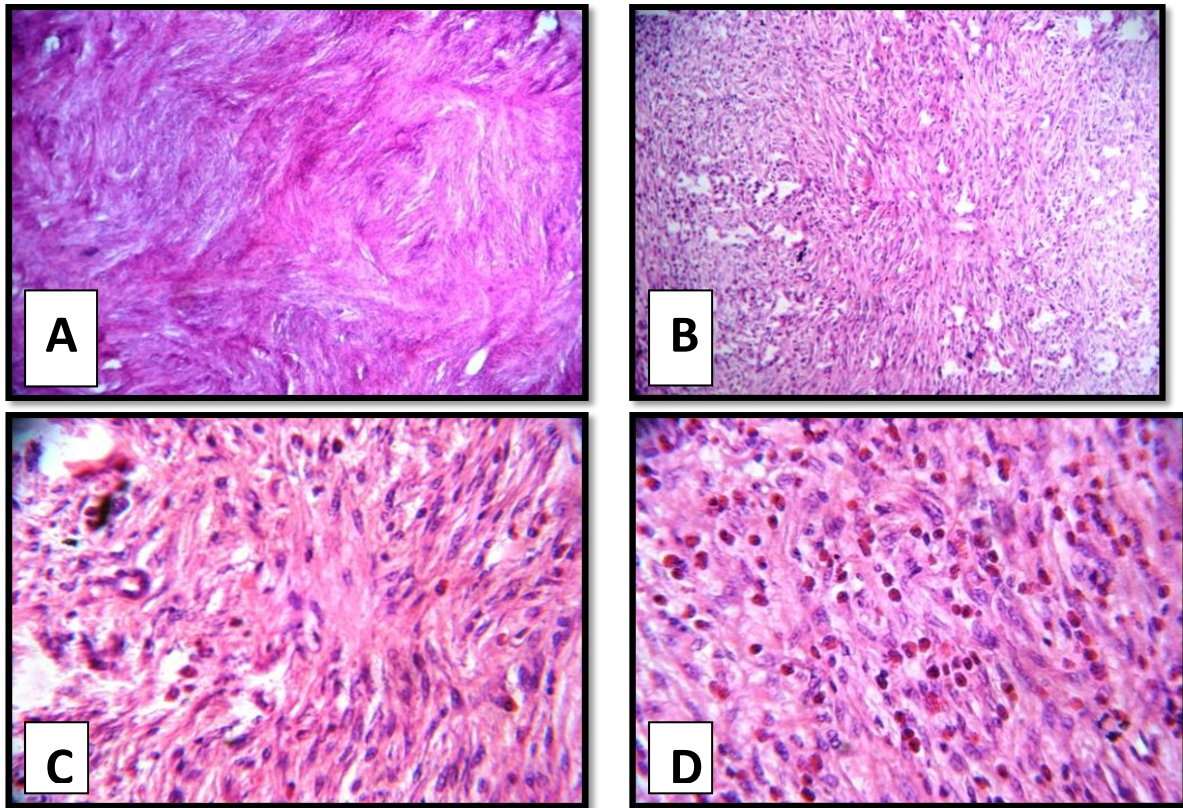


Fig. Fibroma A, B Showed bands of proliferative fibroblast in different direction giving appearance of whorly pattern(H&EX10). C,D eosinophile infiltration (H&EX40)

References

1. Donald, M. M. and James F. Z. (2007). Pathologic basis of veterinary diseases.(4th ed) p:253.
2. Damjanov, I and Linder, J (1996). Andersons pathology 10th ed . part one. p 513.
3. Luna, L.G. (1968). Manual of histological staining methods of the armed forces institute of pathology. 3rd. ed., Mcgrow-Hill Book Company New York.
4. Dixon, P.M. and Head, K.W. (1997). Equine nasal and paranasal sinus tumours: part 2: a contribution of 28 case reports. Veterinary journal (London, England : 1997). 157(3):279-94.
5. Chapel, H. and Haeney, m. (1995). Essential of clinical immunology (3rd ed) Blackwell science.

تشخيص ورم ليفي داخل التجويف الانفي للحمير

خليل زناد
كلية الطب البيطري/ جامعة بغداد

عبد الستار سلمان حمزة
كلية الطب البيطري/ جامعة القادسية

سرهد النجار
كلية الطب البيطري/ جامعة بغداد

الخلاصة

تم احضار احد الحيوانات من الحمير الى العيادة السريرية الخاصه يعاني من كتله صلبه ناتئه داخل التجويف الانفي كروية تقريبا ابعادها (10X11X11.5cm). ازيلت هذه الكتله جراحيا بصوره كامله وارسلت الى مختبرات التقطيع النسيجي واظهر الفحص النسيجي المرضي تكاثر الارومات الليفيه بدرجه كبيره مكونه حزم باتجاهات مختلفه مشكله مظهر حلزوني، الارومه الليفيه اظهرت الغراء بكميه كبيره وكانت ذات انويه غزيره الكروماتين مع ارتشاح للخلايا الحمضيه.شخصت هذه الافه كورم ليفي صلد وهذا اول تقرير يشير الى حدوث الورم الليفي فيجدار الانف في الحمير.